

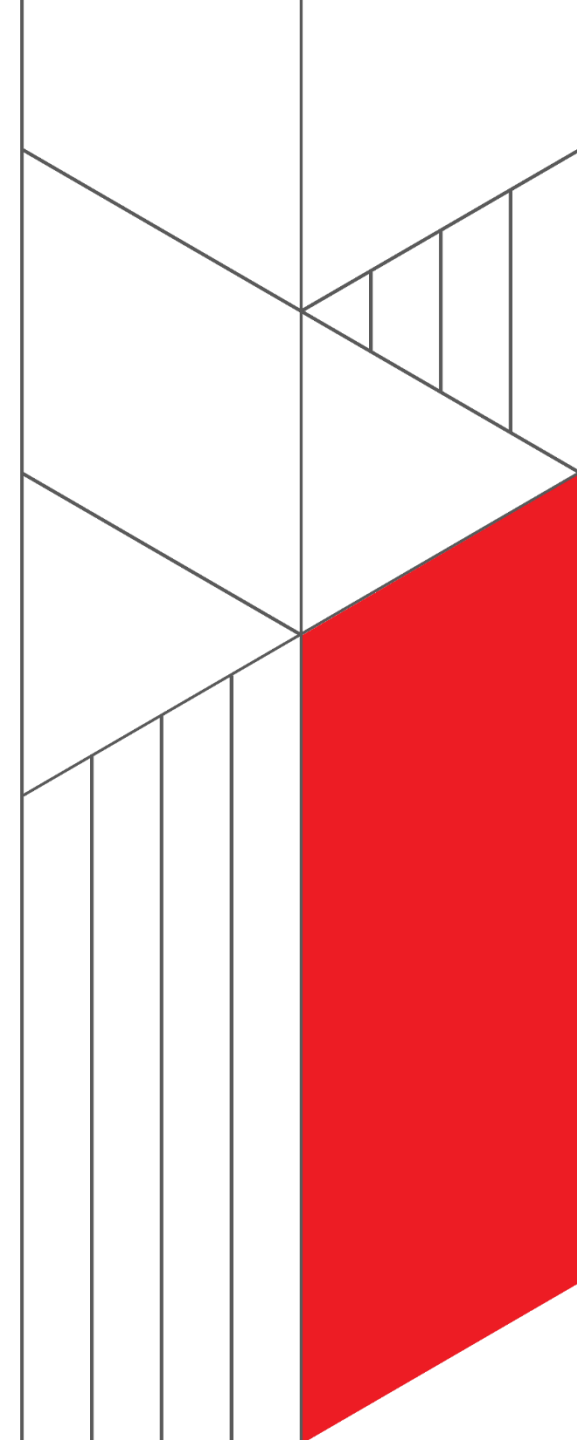
# Public Safety Education and Community College Partnerships

Illinois Community Colleges Chief Financial Officers

Spring 2026



Harper College®



# Presented By:



**Dr. Joanne Ivory**  
Dean, Career and  
Technical Programs  
Harper College



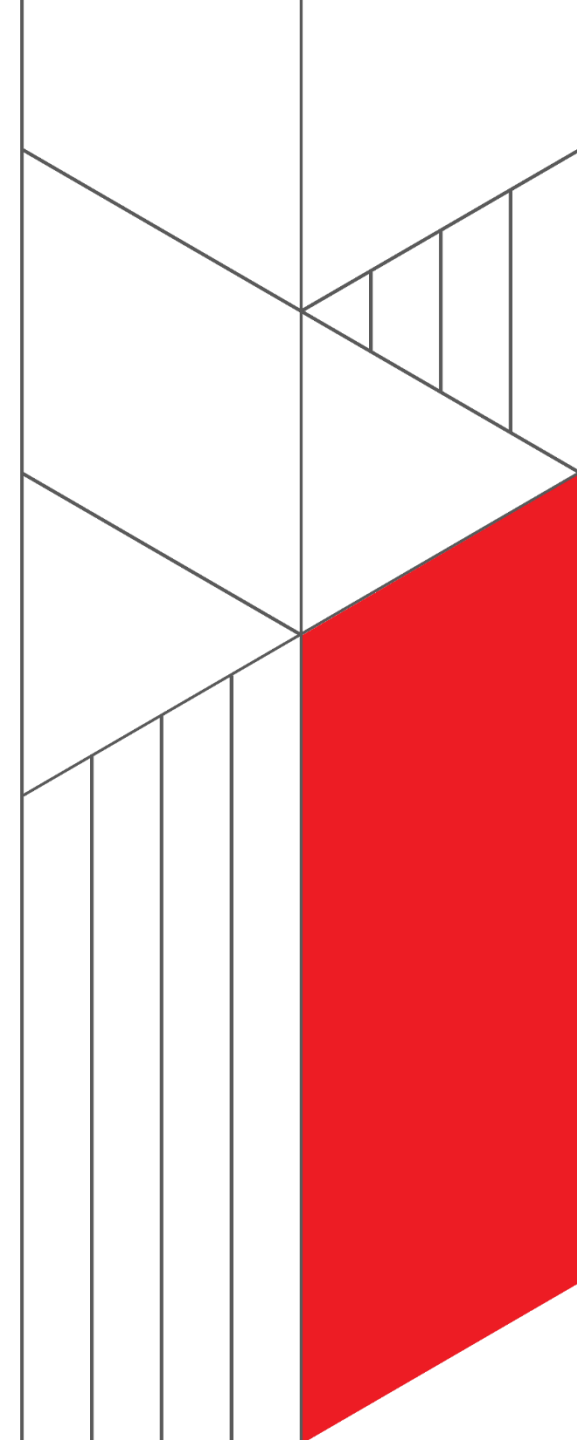
**Stephen Petersen**  
Campus Architect  
Harper College



**Trudy Mesik, AIA**  
Associate  
FGMA



**David Yandel, AIA**  
Principal  
FGMA



# Agenda

- Career and Technical Programs Nationwide / Regionally
- Harper's Approach to Career and Technical Programs
- Emergency Services Training Center Case Study



# Goals and Objectives

- Understand the workforce opportunities public safety projects offer
- Become familiar with the programs and infrastructure needed to support public safety education
- Evaluate different models of public safety education and understand their differences
- Learn about potential partnerships (financial, land-sharing, and student job pathways)
- Understand how to evaluate potential sites for program fit

# FGMA Experience

**1945**  
Year Founded

**350+**  
Higher  
Education  
Projects

**900+**  
Public Safety  
Projects



**100+**  
Illinois  
Education  
Clients

**250+**  
Fire / Fire  
Service Clients

**150+**  
Police / Public  
Safety Clients



# Nationwide Trends

- Career and Technical Education programs are experiencing sustained growth nationwide, particularly within community colleges and high school pathways
- Enrollment in CTE concentrators continues to increase, with select sectors, such as health sciences, showing double-digit growth



# Nationwide Trends | Key Factors

- Rising cost of traditional higher education
- Increased concerns around student debt
- Greater awareness of high-wage, high-demand career pathways that do not require a four-year degree



# Nationwide Trends | Key Factors

- Strong Alignment with Workforce Needs
- Expansion of Work-Based Learning and Apprenticeships
- Shift Toward Skills-Based Hiring
- Increased State and Federal Funding/Investments to expand CTE



# Nationwide Trends | Key Factors

- Rising cost of traditional higher education
- Increased concerns around student debt
- Greater awareness of high-wage, high-demand career pathways that do not require a four-year degree



# Nationwide Trends | First Responders

- Nationwide staffing shortages
- Recruitment and retention have become 2 of the biggest challenges
- Changing face of volunteerism
- Aging of the volunteer fire service
- Training demands

## Training requirements

Note: Departments should reference the unique training requirements in their state. The information below is an aggregate of individual state training requirements.

Training module	Rank	Average class length in hours	Approximate time to complete for volunteers*
<b>Firefighter</b>			
Firefighter I	All firefighters	120 hours	5 months
Firefighter II	All firefighters	100 hours	4 months
Firefighter III	Firefighters aspiring to be officers	60 hours	2 months
Officer I	First-level company officer	40-60 hours	1 month
Officer II	First-level company officer	40-60 hours	1 month
Officer III	Command-level officer	40 hours	1 month
Officer IV	Chief-level officer	40 hours	1 month
<b>EMS licensure levels**</b>			
Emergency Medical Responder	Basic provider (firefighter)	48 hours	
EMT	Basic ambulance provider	150 hours	
Advanced EMT	Enhanced ambulance provider	200 hours beyond EMT	

# Harper College's Approach



# CTP Growth

Harper College's Career and Technical Programs continue to experience steady enrollment growth across high-demand programs, including:

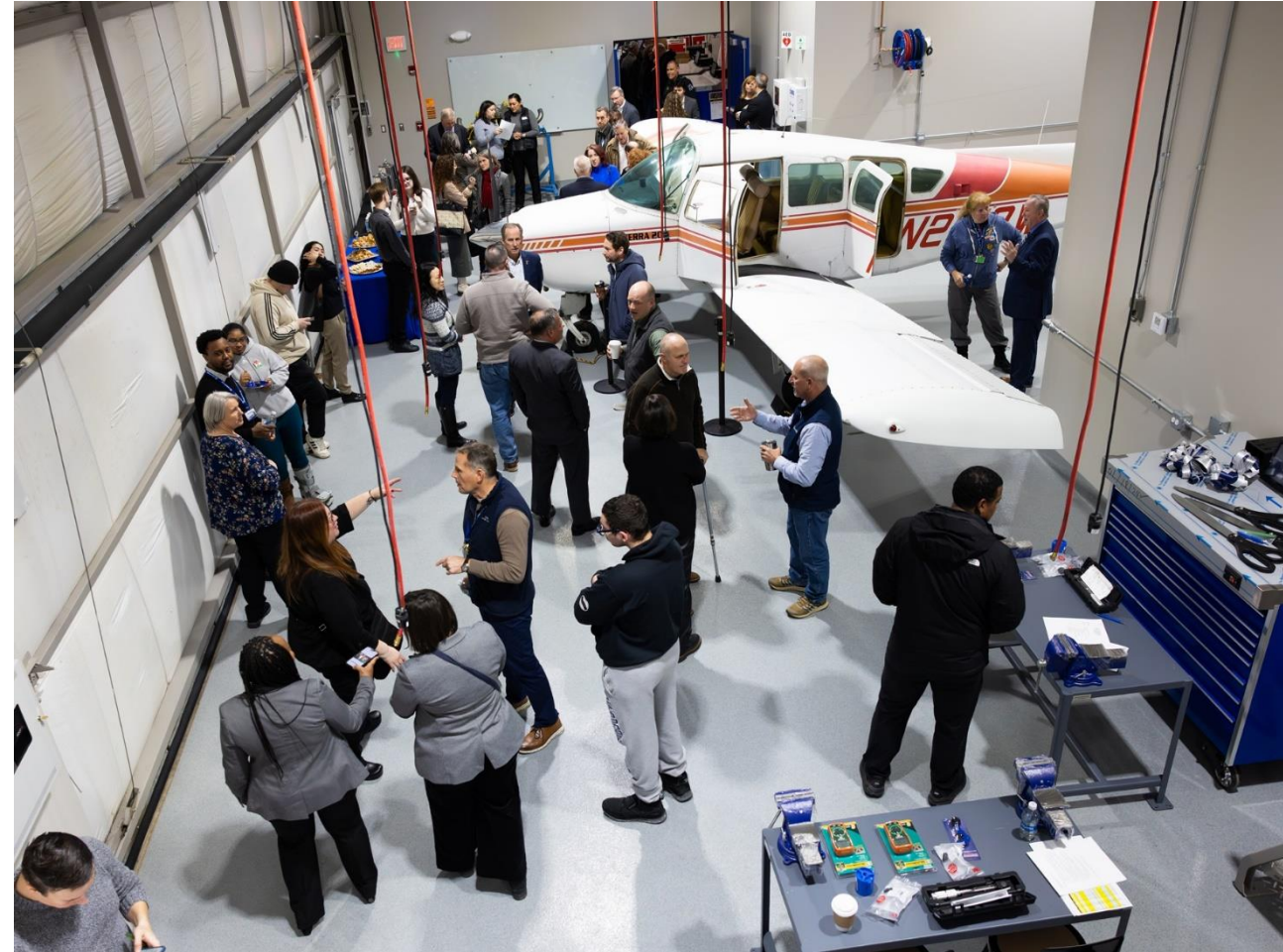
- Fire Science
- Manufacturing
- Heating, Ventilation and Air-Conditioning (HVAC)
- Cybersecurity
- Aviation (Emerging Programs)



# CTP Growth

Program expansion is driven by a data-informed approach, including:

- Use of labor market analytics (Lightcast)
- Strong industry advisory partnerships
- Collaboration with high school and dual credit partners



# CTP Growth

All new CTP programs are designed with a stackable credential framework, enabling students to:

- Earn industry-recognized credentials
- Progress seamlessly toward certificates and AAS degrees
- Enter and advance within the workforce efficiently



# Public Safety Training

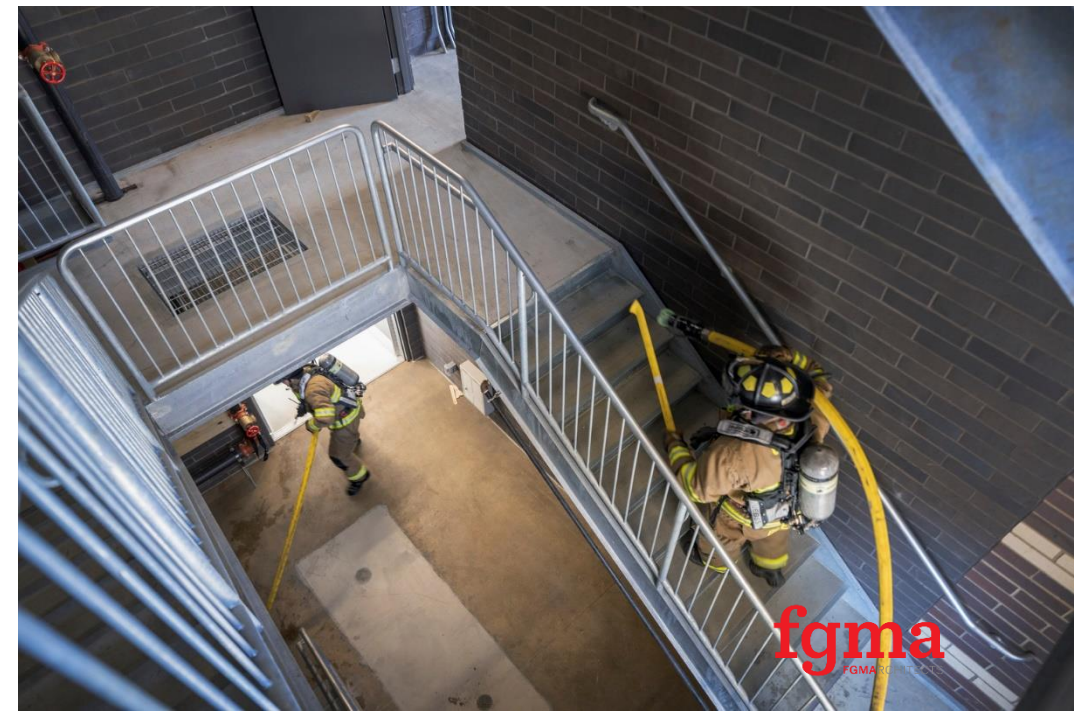
# Trends in Public Safety Training Centers

- From Stand-alone to Regional Safety Hubs
- Growth in Scenario-Based and Simulation-Heavy Training
- Rapid Adoption of VR, AR and Mixed-Reality Training
- Alignment of Curriculum with Federal Frameworks and Credentials
- Opportunities for Stackable Credentials and Degree Pathways
- Emphasis on Wellness, Ethics and Community Trust
- Capital Funding Blends Public Safety, Workforce and Community Development



# Training Approach

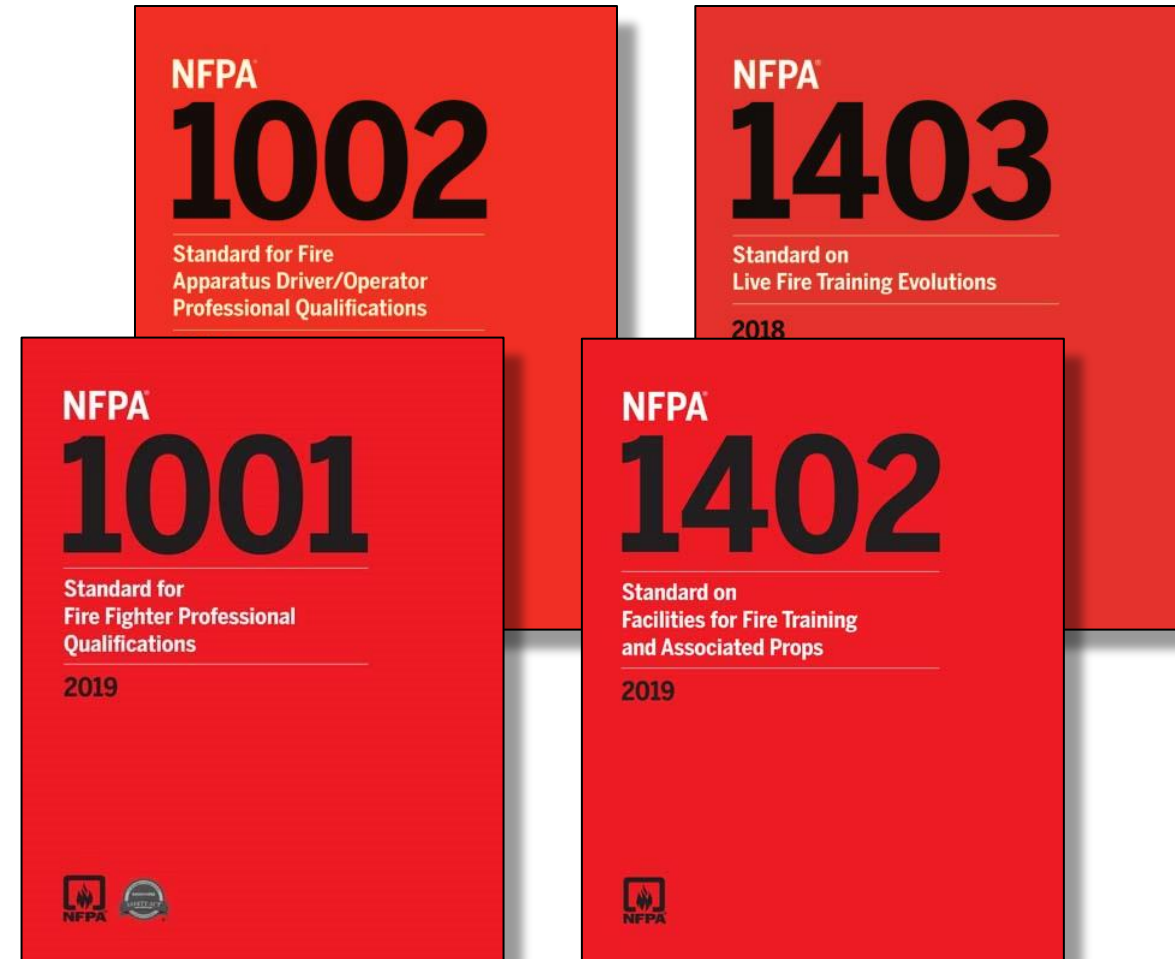
- New Tactics
- Range of Training Exercises
- Health and Wellness
- Cancer Awareness
- Anti-Bias / Deescalation Training
- Multi-Agency Response Training
- Facilities for Concurrent Training



# Practical Training

## NFPA Training Standards

- Fire Service Qualifications
- Apparatus Driver Qualifications
- Facilities Design & Construction
- Live Fire Training Requirements
- Instructors / Safety Personnel Accreditation and Certification
- HAZMAT / WMD Response
- Operations / Training for Technical Search and Rescue



# Holistic Training

## Classroom Training

- Room Flexibility (Meetings/Training)
- Integrated Technology
- Size Based on Usage

## Physical Training

- Improved Fireground Performance
- Improve Overall Health and Wellness
- Boost Immunity
- Enhance Resiliency



# Public Safety Training Campus



- 1 - Academic Building
  - 2 - Canine Training Building
  - 3 - Multi-Use Cityscape
  - 4 - Skid Pan
  - 5 - Driving Track
  - 6 - Skills Pad
  - 7 - Driver Training Building
  - 8 - Urban Search & Rescue Area
  - 9 - High Bay Training Building
  - 10 - Commercial Fire Training Building
  - 11 - Residential Fire Training Building
  - 12 - Outdoor Fire Training Area
  - 13 - Fuel Station
  - 14 - Apparatus Bay Building
  - 15 - Parking Garage
- Fire Training** (Red)
- Police Training** (Blue)
- Shared Training** (Purple)

Montgomery County Public Safety Training Academy | 40 Acres | 12 Buildings



# Public Safety Training Campus

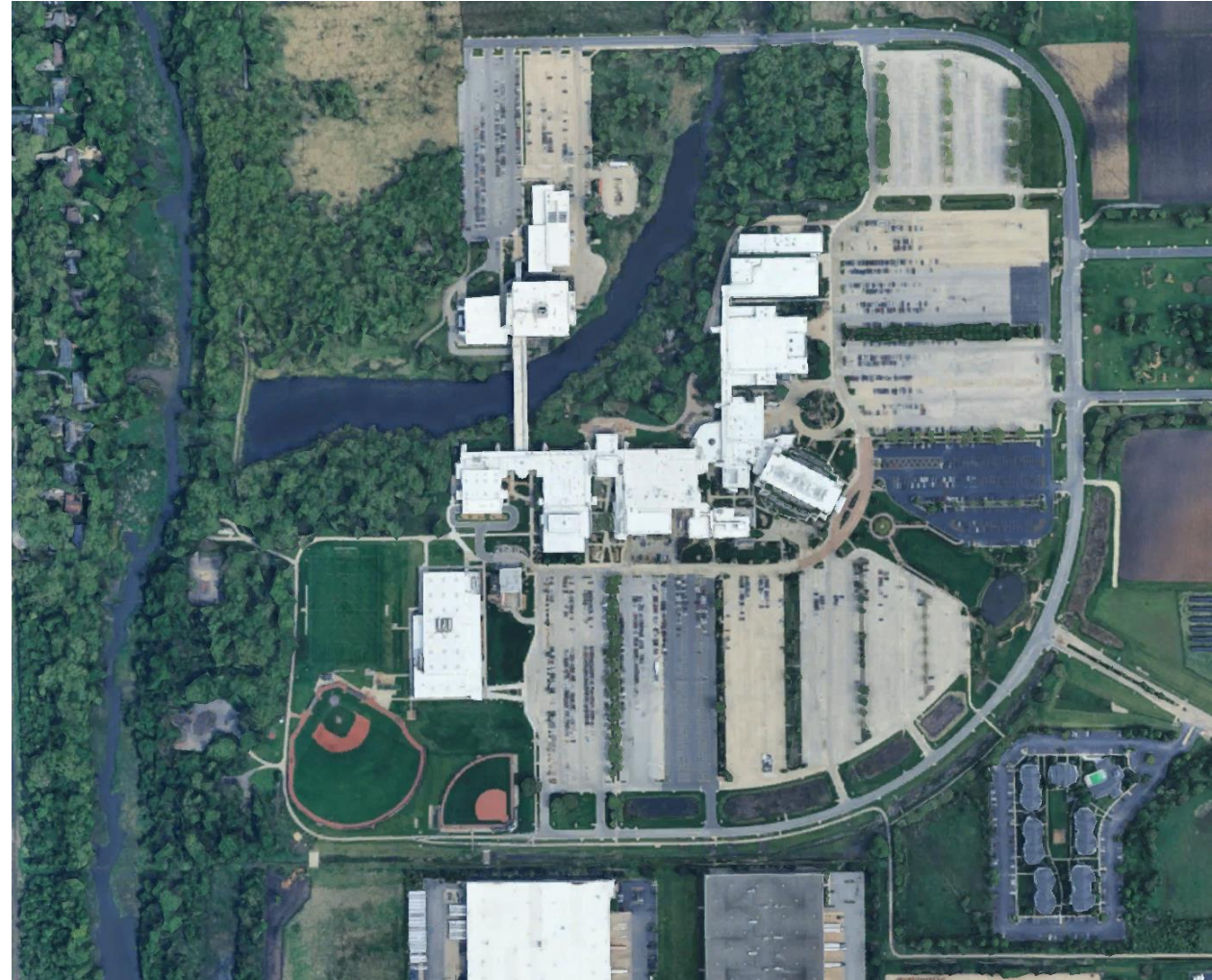


Montgomery County Public Safety Training Academy | 40 Acres | 12 Buildings



# Public Safety Institute

- Shared Resource for Local Public Safety Departments
- JJC Emergency Management Services Program
- JJC Fire Science Program
- Professional Training and Academic Instruction



# Public Safety Institute

- Deliver a functional and safe design that supports fire services, police, and educational missions.
- Optimize land use to accommodate current and future needs.
- Align design with accreditation and training standards for public safety programs.
- Ensure long-term flexibility, durability, and cost-effectiveness.





# William Rainey Harper Emergency Services Training Center

# Program Drivers

Increase number of certificate classes requiring hands-on training

Facility in close proximity to local fire departments

Annual training for firefighters provides continuous enrollment pipeline

Train new recruits thus supplying area fire departments with much needed candidates for employment



# Goals

- Facility that functions at a high level for fire training
- Programs that leverage relationships to enhance enrollment
- Aesthetically pleasing and keeping with the Main Campus
- Minimize disruption to neighbors



# Programmatic Goals

- Meet ISO Training Requirements:
- Minimum of 2-acre training grounds
- Four-story training tower capable of supporting live fire training and constructed of fire-resistive construction
- Capable of providing eight 3-hour training drills at the training facility per member per year



# Programmatic Summary

## Site Redevelopment

### 4-Story Fire Training Tower

- Supports wide range of training
- 3 Initial and 3 Future Gas Fueled Fire Training Props

### Classroom Building

- Indoor / Outdoor Learning Spaces
- Equipment Storage
- All-Gender Restrooms



# Internal Process

- Began with a strategic vision to expand regional fire service training capacity
- Engaged local fire chiefs and municipalities to validate need and inform planning
- Developed a business plan with strong support from area fire departments
- Board approval secured; design and construction partners engaged



# Project Milestones

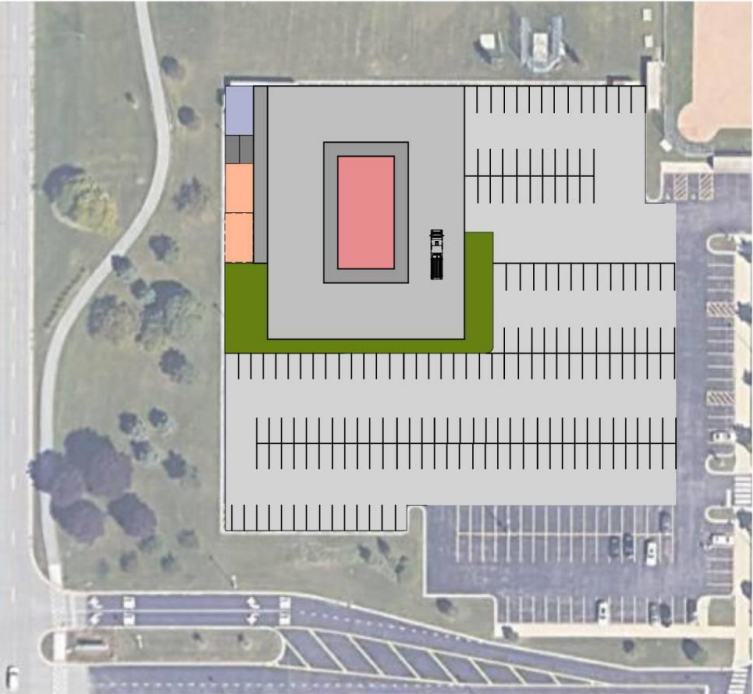
- Spring 2023 – Feasibility Study
- Fall 2024 – Design Complete
- Spring 2025 – Groundbreaking
- Spring 2026 – Ribbon Cutting
- Summer 2026 – Program Launch
- First Cohort – June 2026 at full capacity, demonstrating immediate demand



# Feasibility Study



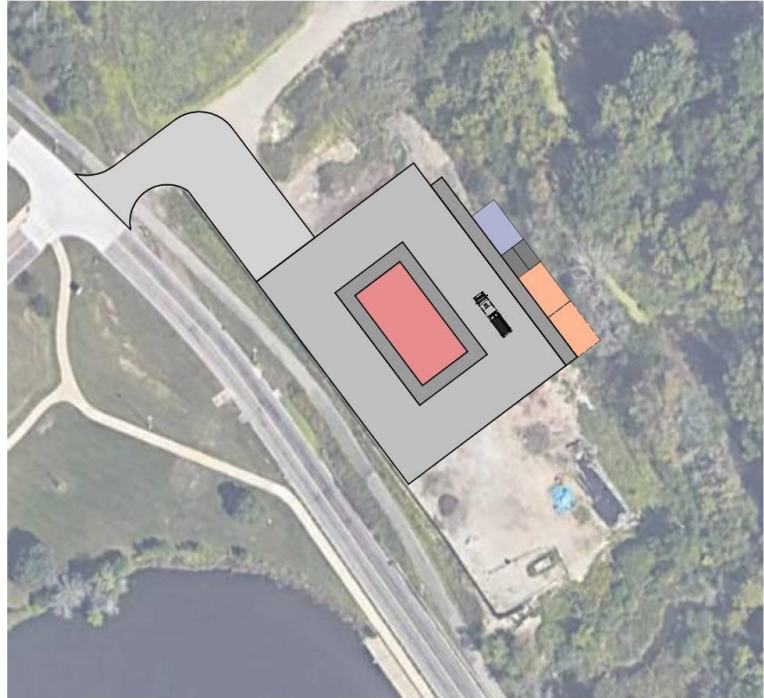
# Feasibility Study | Site Options



**SITE 1  
WEST  
CAMPUS**



**SITE 2  
NORTHWEST  
CAMPUS**



**SITE 3  
NORTHEAST  
CAMPUS**

# Aerial View Looking South



# Aerial View Looking North



# View Looking Southwest



# View Looking Northeast



# Sustainability Initiatives

## Training Tower

- Unoccupied and unconditioned structure – Does not qualify for LEED or Net Zero
- Concrete pavement for durability and to reduce heat island effect
- Best Management Practices (BMP's) for stormwater management
- Use of local materials with high recycled content
- Construction waste management



# Sustainability Initiatives

## Classroom Building

- Energy efficient envelope
- Reflective roof surfaces
- Energy efficient heating and cooling systems
- Low-flow plumbing fixtures and LED lighting



# Project Costs

Training Tower: \$6,100,000

Support Building: \$1,500,000

Owner's Costs: \$1,800,000

**Project Total: \$9,400,000**

\$1,000,000 funding from federal sources (SAFETech Grant) used for:

- Interior Burn Props
- Instructor Full Gear Fire Sets and PPE
- Self-Contained Breathing Apparatus



# Funding Opportunities

- Local Funding
- Illinois Capital Appropriations
- Illinois DCEO Workforce & Capital Grants
- FEMA – Assistance to Firefighters Grants (AFG)
- DOJ / Bureau of Justice Assistance (BJA) Grants
- COPS Office (DOJ)
- U.S. Department of Education – Perkins & CTE-Related Programs
- USDA Community Facilities Direct Loan & Grant Program (Rural Programs)



# Questions?



**We Build Community.**